

Chester Township Zoning



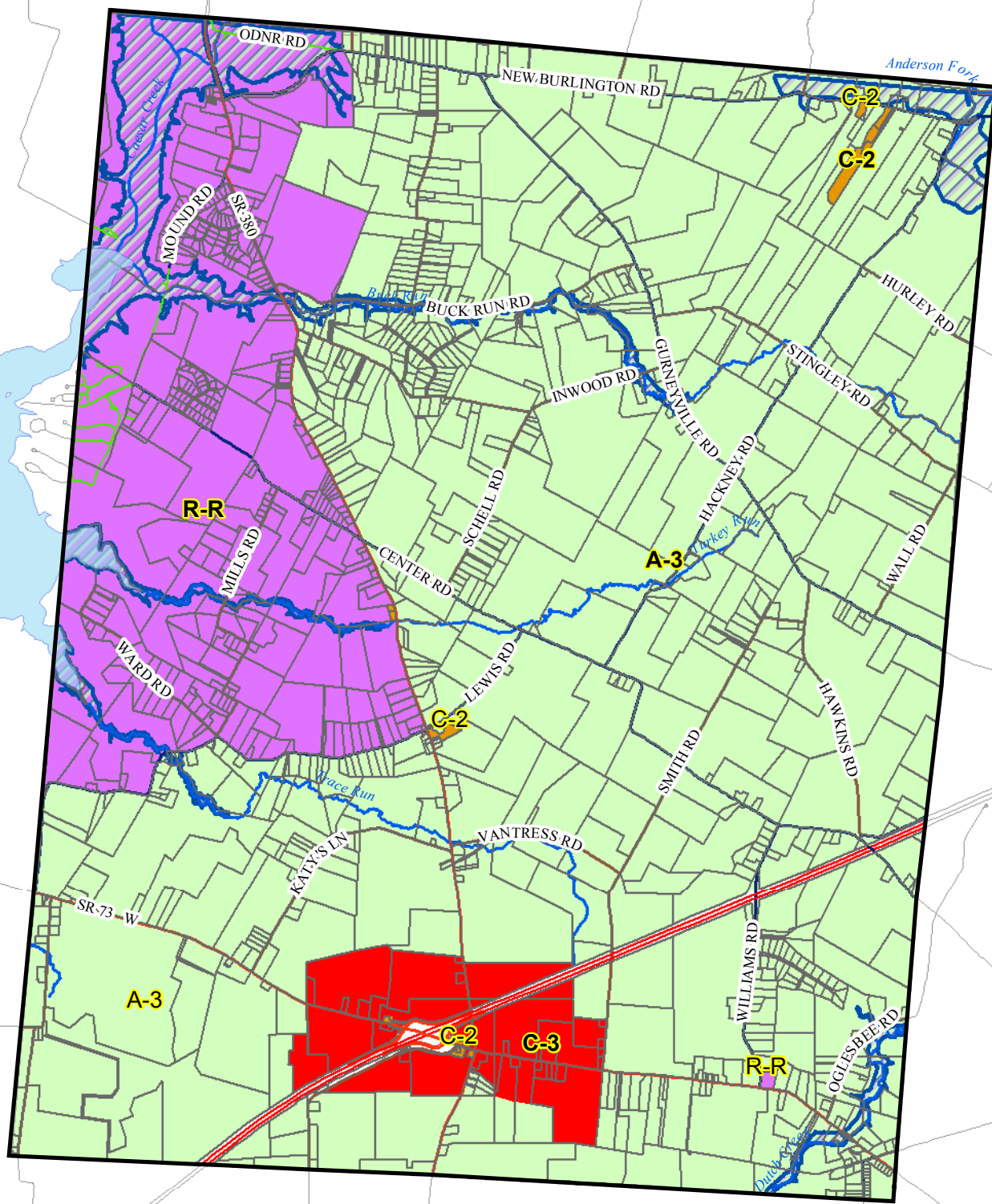
Chester Township Zoning

Document Path: C:\AV\Projects\2015 ProjectFiles\Zoning\Chester\ChesterTownship10-01-2015.mxd



Produced by the Clinton County GIS Department with information from the Clinton County Building and Zoning Department

1 in = 1 miles



Zoning	
District	District Name
	A-1, Agriculture and Open Space Preservation District
	A-3, Agriculture – Residential Transition District
	C-1, Town-Centered Commercial District
	C-2, General Commercial District
	C-3, Highway Service Commercial District
	I-1, Limited Industrial District
	I-2, Industrial District
	PUD-1, Planned Unit Development
	R-R, Rural Residential District
	S-R, Suburban Residential District
	UZ, Unzoned