

LOCATION PLAN

CLI.-380-6.24

SPRINGFIELD-XENIA-CLARKSVILLE RD.

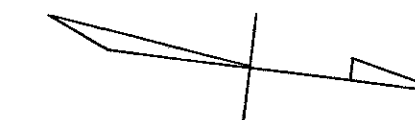
CLINTON COUNTY

1955

SCALE: 1" = 40'

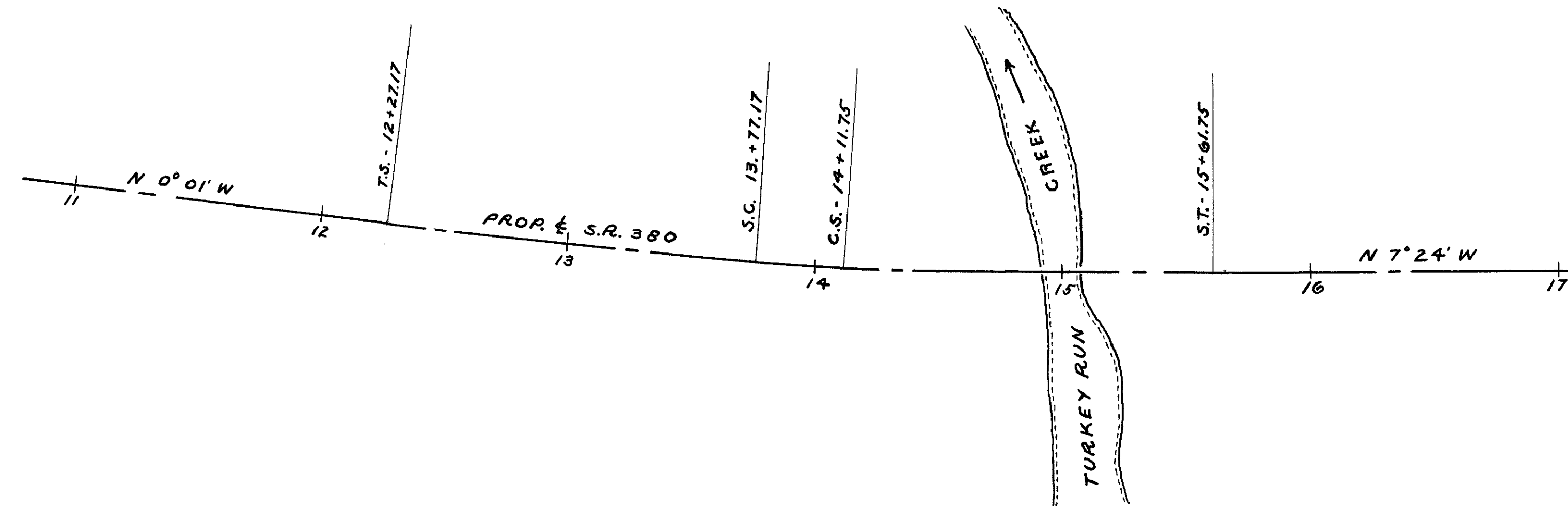
RECORDED
Platbook 4 Page 86
Clinton County Plat Record

CURVE DATA
 P.I. = 13+94.02
 Δ = 7° 23' 41"
 D.C. = 4° 00'
 R.C. = 1432.40
 L.C. = 34.58
 T.S. = 12+27.17
 P.C. = 13+77.17
 P.T. = 14+11.75
 S.T. = 15+61.75
 E.C. = 16+11.75
 E.T. = 17+00.00
 Δ = 3° 00'

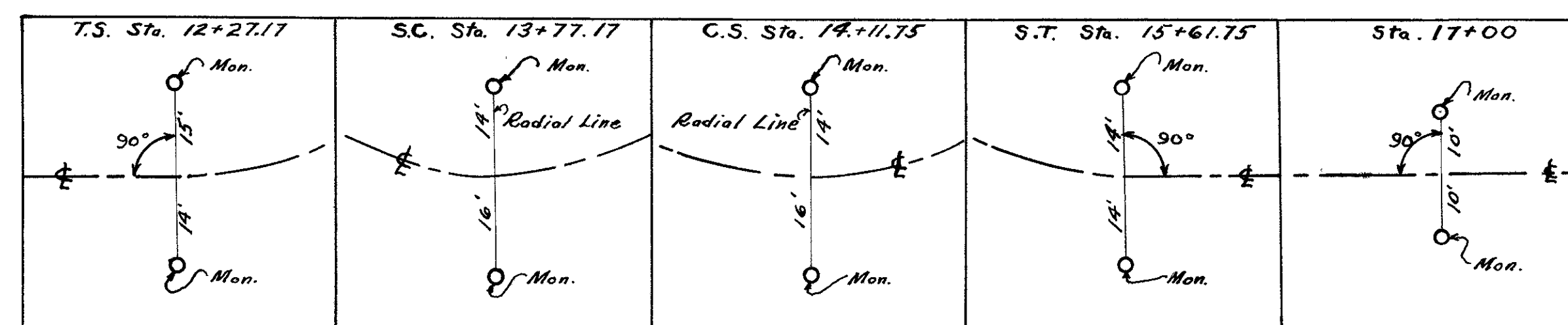


I hereby certify that this is a true delineation of a survey made by the Ohio Department of Highways.

Date 8-2-55 Julian S. Drayton
 Div. Deputy Director
 Registered Surveyor No. 2443
 Registered Civil Engr., No. 2159



CENTERLINE REFERENCE MONUMENTS

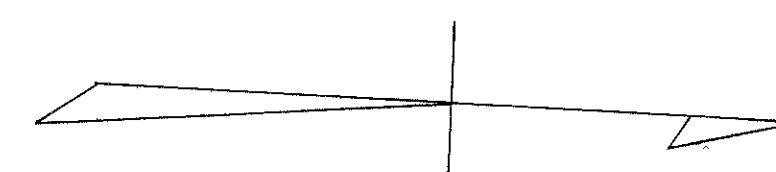


Monument Setting Completed 1-28-58
By H.C. Kelley

FED. RD. DIVISION	STATE	PROJECT
2	OHIO	STATE
R/W PLAN		
CLINTON COUNTY		
CLI - 380 - 6.24		
Drawn by	Date	
Revised		



CHESTER TOWNSHIP
M.S. 777

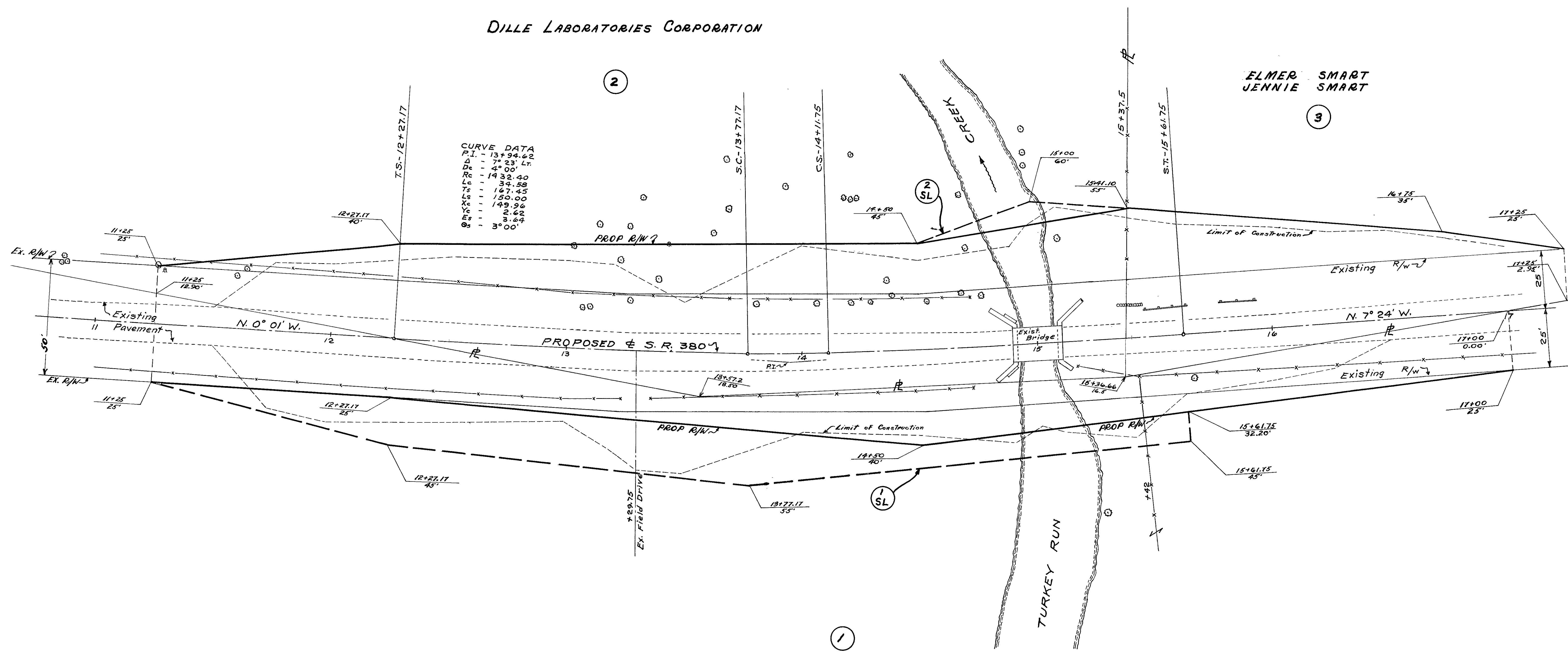


DILLE LABORATORIES CORPORATION

ELMER SMART
JENNIE SMART

CURVE DATA

P.I.	13+94.62
Δ	7° 23' Lt.
De	4° 00'
Rc	1432.40
Lc	34.58
Ls	167.45
Lx	150.00
Xc	149.96
Ye	2.62
Es	3.64
Os	3° 00'



HAROLD K. EDMINSON
POLLY H. EDMINSON