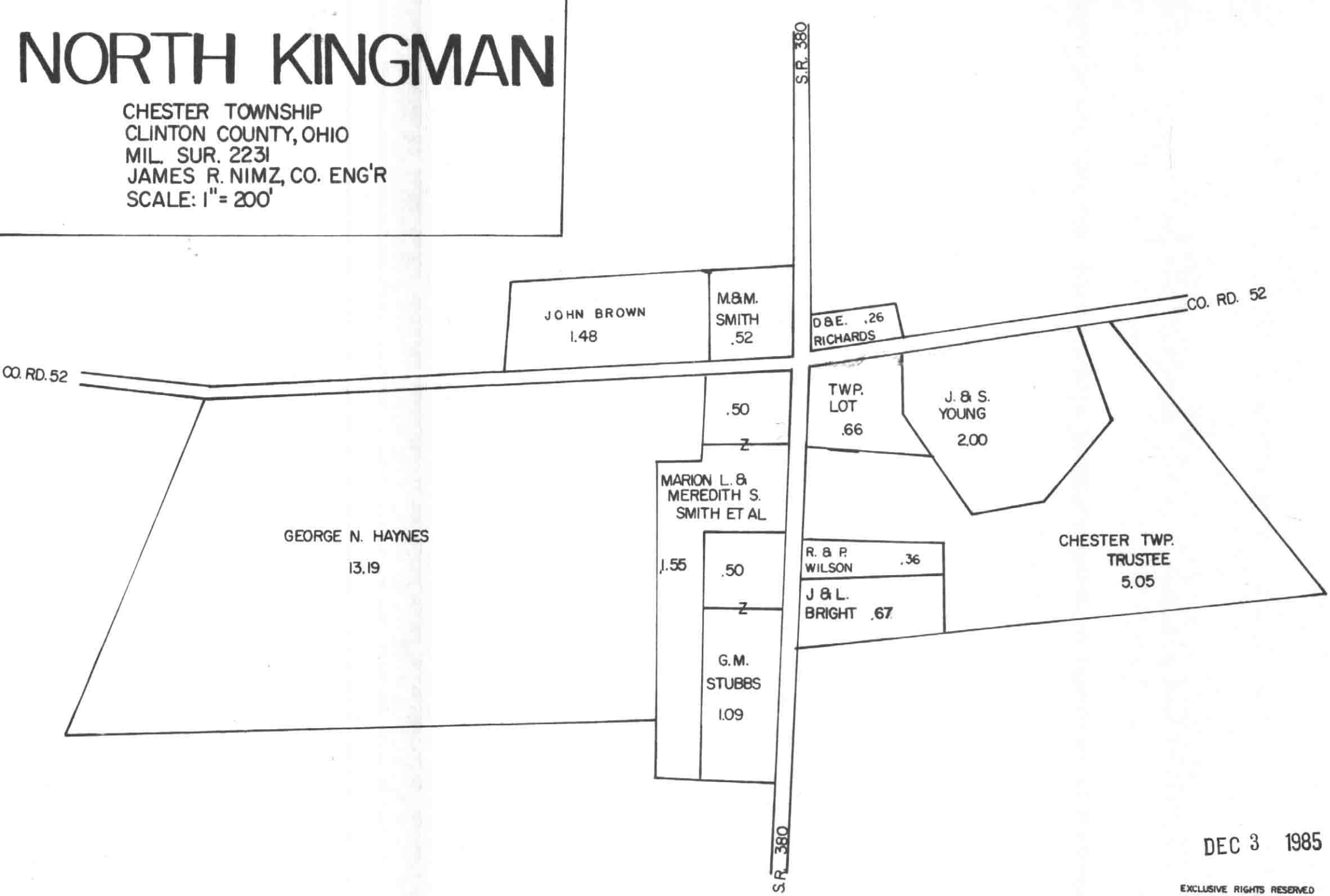


NORTH KINGMAN

CHESTER TOWNSHIP
CLINTON COUNTY, OHIO
MIL. SUR. 2231
JAMES R. NIMZ, CO. ENG'R
SCALE: 1" = 200'



DEC 3 1985

EXCLUSIVE RIGHTS RESERVED
BY
CLINTON COUNTY ENGINEER