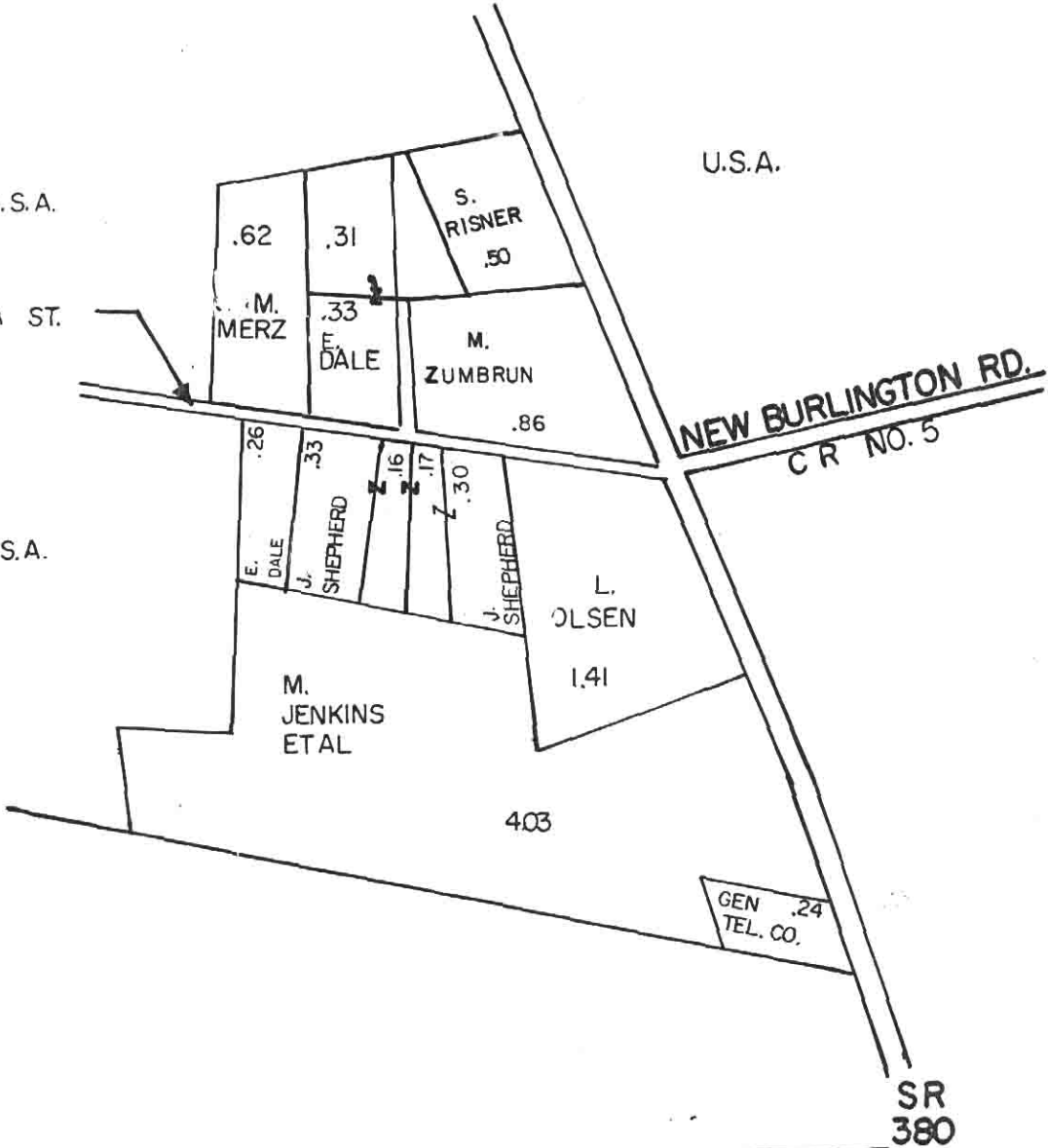


S.R.  
380

U.S.A.

U.S.A.

HIAWATHA ST.



U.S.A.

NEW BURLINGTON RD.  
CR NO. 5

SR  
380

# NEW BURLINGTON

V.M.S. 570 571  
 CHESTER TOWNSHIP  
 CLINTON COUNTY, OHIO  
 WILLIAM T. TEMPLE, CO. ENGR  
 SCALE-1" = 200'

1995