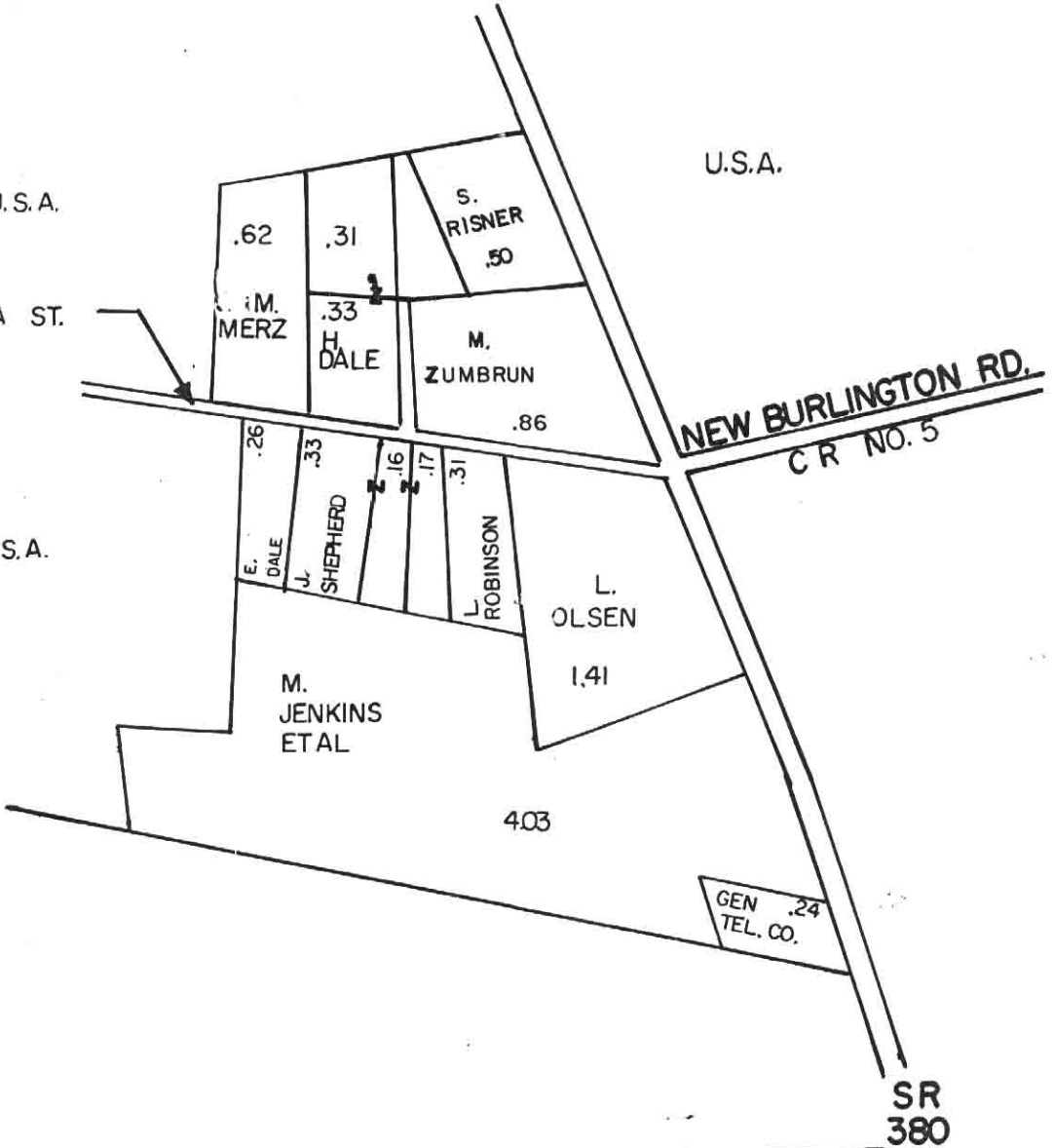


S.R.
380

U.S.A.

U.S.A.

HIAWATHA ST.



U.S.A.

NEW BURLINGTON RD.
C R NO. 5

SR
380

NEW BURLINGTON

V.M.S. 570 571

CHESTER TOWNSHIP
CLINTON COUNTY, OHIO

WILLIAM T. TEMPLE, CO. ENGR

SCALE-1" = 200'